

## Products

### OVERA - W

The OVERA-W is based on the principle of water wheels. As a consequence of our continuous research and development, the potential- and kinetic energy of water is used in high energy density. Our technologies can be applied effectively even at sites with small heads and water volumes of few  $\text{m}^3/\text{s}$ . The OVERA-W is fish friendly and guaranties a near bottom discharge of sediments. Due to their novel design and as industrially produced Compact Hydropower Unit, it achieves a high grade workmanship and time-saving on-site installation.

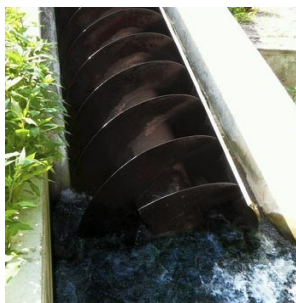
The OVERA-W is fish friendly and guaranties a near bottom discharge of sediments. Due to their novel design and as industrially produced Compact Hydropower Unit, it achieves a high grade workmanship and time-saving on-site installation.



### OVERA - S

The OVERA-S is based on the principle of the Archimedean screw, which was originally developed to pump water. The machine utilizes the potential energy. OVERA-S machines can be used very effectively for small heads of about 1,5 - 6 m and water supply of preferrably more than  $4 \text{ m}^3/\text{s}$  per unit.

Because of its innovative design and as industrially produced Compact Hydropower Plant, it achieves high grade workmanship and time-saving on-site installation.



## OVERA - Hydropower Plants

OVERA-Hydropower Plants are designed and manufactured as compact assembly plants well adapted to civil works. This allows a quick on-site installation and reduces costs of civil engineering works and construction site management.

The compact design also allows for the modular development and expansion of our hydropower plants. For the utilization of larger water resources, several OVERA units can be mounted side-by-side easily.

### The OVERA - civil works

For the OVERA-Hydropower Plants special hydraulic engineering solutions were developed based on standardized sheet piles, steel- or concrete beams, sliding lock gates and screens and bumpers against floating residue.

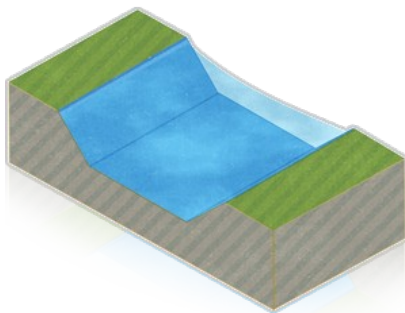


Image 1

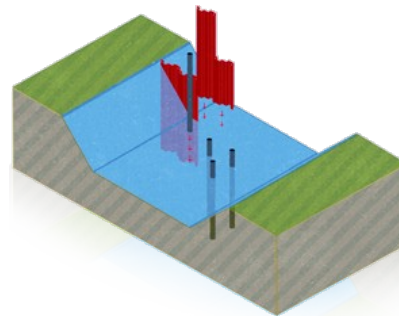


Image 2

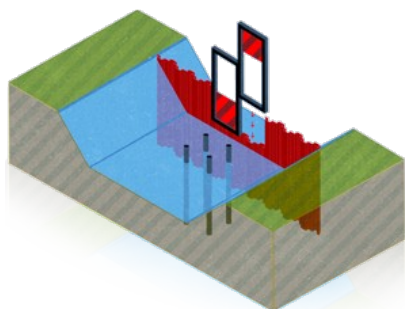


Image 3

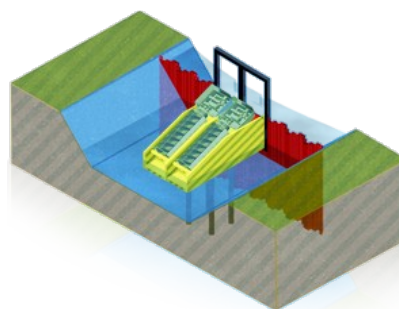


Image 4

### Contact:

ÖWATEC OVERA HYDRO GmbH  
Ziethenweg 81  
33104 Paderborn  
Deutschland

Tel.: +49 (5254) 936 19 52  
Fax: +49 (5254) 936 19 53  
Email: [hydro@overa.de](mailto:hydro@overa.de)  
Web: [www.overa.de](http://www.overa.de)